

# Computer Networks - *Xarxes de Computadors*

## Outline

- Course Syllabus
- Unit 1: Introduction
- Unit 2. IP Networks
- **Unit 3. LANs**
- Unit 4. TCP
- Unit 5. Network applications

Based on: <https://studies.ac.upc.edu/FIB/grau/XC/#slides>

# Unit 3. Local Area Networks, LANs

## Outline

- **Introduction**
- IEEE LAN Architecture
- Ethernet
- Ethernet Switches
- Wireless LANs

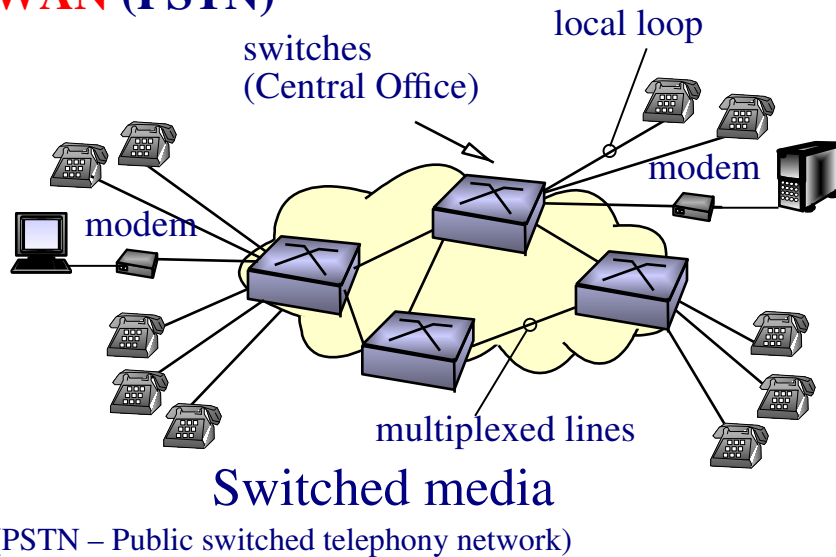
# Unit 3. Local Area Networks, LANs

## Introduction – WAN and LAN differences

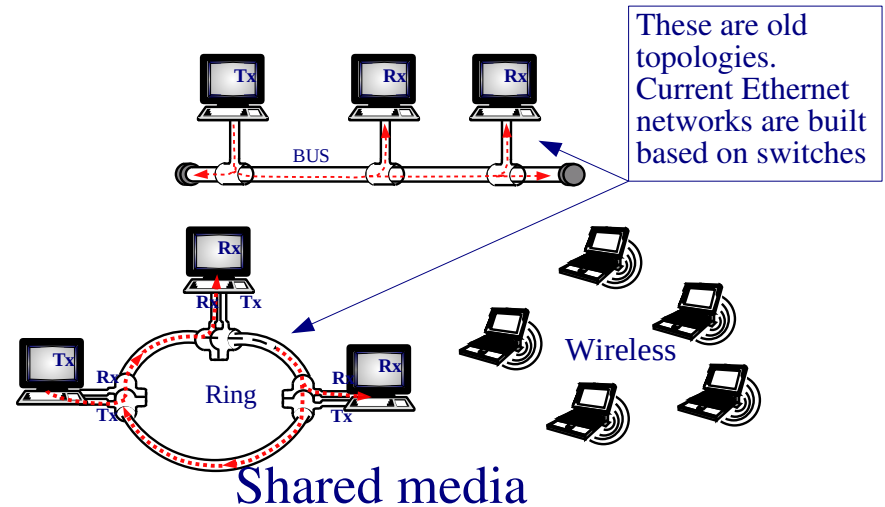
- **WANs:**
  - Main goal: scalability.
  - Switched network with mesh topology.
- **LANs:**
  - Multi-access network **with shared media**.
  - A Medium Access Control (MAC) protocol is needed.

To govern the access to the transmission medium

### WAN (PSTN)



### LANs



# Unit 3. Local Area Networks, LANs

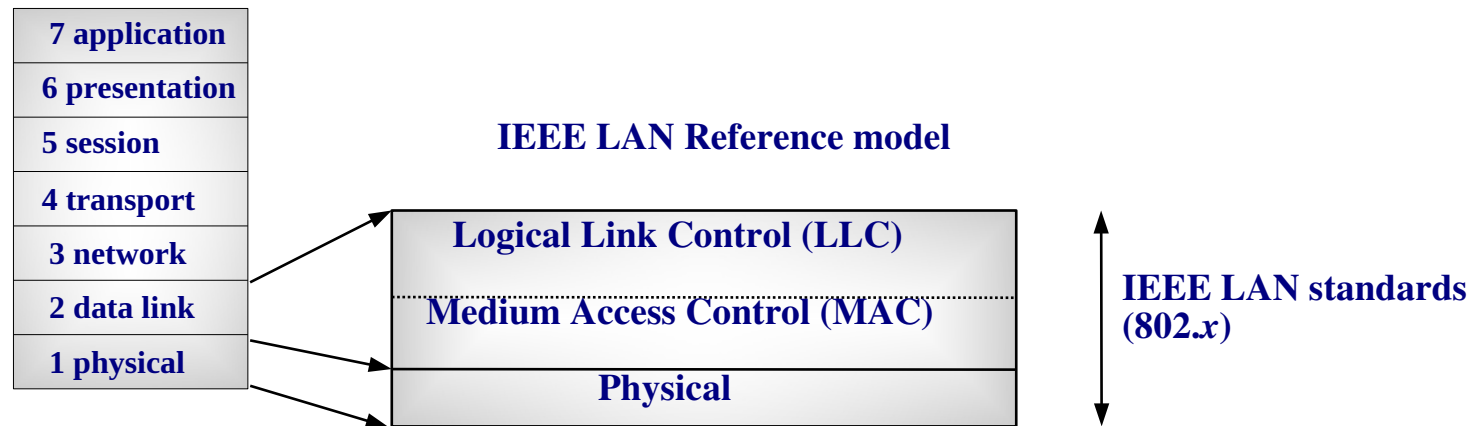
## Outline

- Introduction
- **IEEE LAN Architecture**
- Ethernet
- Ethernet Switches
- Wireless LANs

# Unit 3. Local Area Networks, LANs

## IEEE LAN Architecture

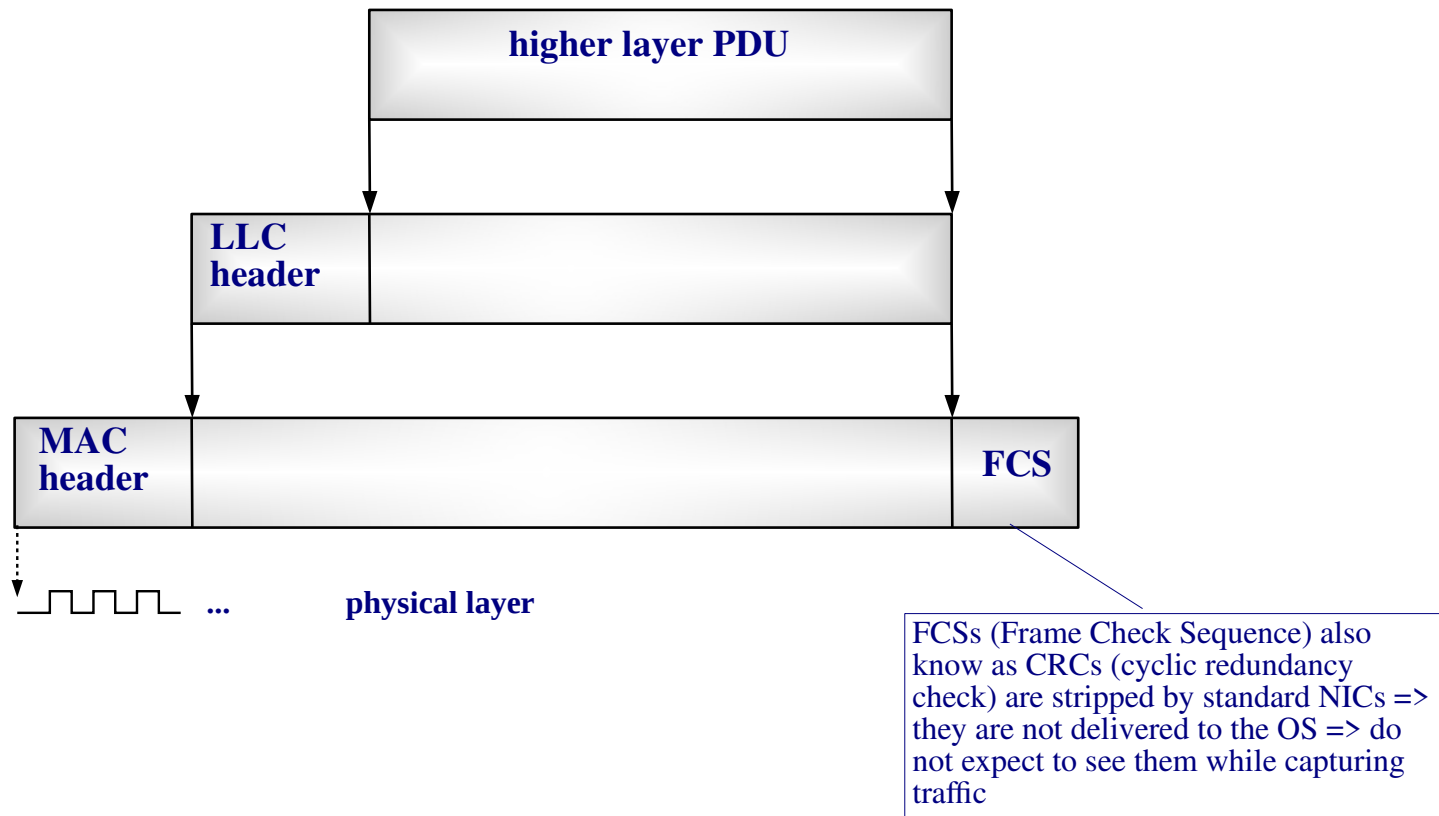
OSI Reference model:



- **LLC** sublayer (802.2):
  - Common to all 802.x MAC standards.
  - Define the interface with the upper layer and specifies several services (operational modes):
    - (i) unacknowledged connectionless, (ii) connection oriented, (iii) acknowledged connectionless.
- **MAC** sublayer:
  - Define the medium access protocol. It is different for each LAN technology.

## Unit 3. Local Area Networks, LANs

### IEEE LAN Architecture – LAN encapsulation



## Unit 3. Local Area Networks, LANs

### Types of MACs

- **Token Passing:**
  - Only the station having the token can transmit. After transmission the token is passed to another station.  
Examples: FDDI and Token-Ring (**obsolete**)
- **Random:**
  - There is no token. Instead, there is a non null collision probability. In case of collision, the frame is retransmitted after a random *backoff* time.
  - Examples: **Ethernet, WiFi**

## Unit 3. Local Area Networks, LANs

### IEEE LAN Architecture – IEEE 802 standards (some)

802.1: LAN/MAN architecture.

802.2 Logical Link Control (LLC)

802.3 Ethernet

802.4 Token Bus

802.5 Token Ring

802.8 FDDI

802.11 WiFi: Wireless LANs.

802.15 Personal Area Networks or short distance wireless networks (WPAN)

802.15.1 Bluetooth

802.15.4 low data rate and low cost sensor devices

802.16 WiMAX: broadband Wireless Metropolitan Area Networks.

Name	Description	Status
IEEE 802.1	Higher Layer LAN Protocols Working Group	Active
IEEE 802.2	LLC	Disbanded
IEEE 802.3	Ethernet	Active
IEEE 802.4	Token bus	Disbanded
IEEE 802.5	Token Ring MAC layer	Disbanded
IEEE 802.6	MANs (DQDB)	Disbanded
IEEE 802.7	Broadband LAN using Coaxial Cable	Disbanded
IEEE 802.8	Fiber Optic TAG	Disbanded
IEEE 802.9	Integrated Services LAN (ISLAN or isoEthernet)	Disbanded
IEEE 802.10	Interoperable LAN Security	Disbanded
IEEE 802.11	Wireless LAN (WLAN) & Mesh (Wi-Fi certification)	Active
IEEE 802.12	100BaseVG	Disbanded
IEEE 802.13	Unused <sup>[2]</sup>	reserved for Fast Ethernet development <sup>[3]</sup>
IEEE 802.14	Cable modems	Disbanded
IEEE 802.15	Wireless PAN	Active
IEEE 802.15.1	Bluetooth certification	Disbanded
IEEE 802.15.2	IEEE 802.15 and IEEE 802.11 coexistence	Hibernating <sup>[4]</sup>
IEEE 802.15.3	High-Rate wireless PAN (e.g., UWB, etc.)	?
IEEE 802.15.4	Low-Rate wireless PAN (e.g., ZigBee, WirelessHART, MiWi, etc.)	Active
IEEE 802.15.5	Mesh networking for WPAN	?
IEEE 802.15.6	Body area network	Active
IEEE 802.15.7	Visible light communications	?
IEEE 802.16	Broadband Wireless Access (WiMAX certification)	hibernating
IEEE 802.16.1	Local Multipoint Distribution Service	hibernating
IEEE 802.16.2	Coexistence wireless access	hibernating

Source: [https://en.wikipedia.org/wiki/IEEE\\_802](https://en.wikipedia.org/wiki/IEEE_802)

See: <http://grouper.ieee.org/groups/802/1>, 2, ...

# Unit 3. Local Area Networks, LANs

## Outline

- Introduction
- IEEE LAN Architecture
- **Ethernet**
- Ethernet Switches
- Wireless LANs

## Unit 3. Local Area Networks, LANs

### Ethernet – Introduction

- Designed by **Bob Metcalfe** at Xerox in mid-70s.
- Initially was commercialized by Digital, Intel and Xerox consortium (**DIX**).
- Ethernet was standardized by IEEE (**802.3**) in 1983.
- Nowadays Ethernet is the **leading LAN technology**. There are numerous Ethernet standards with different transmission mediums, and line bitrates. There are several active Ethernet working groups inside IEEE 802.3.

## Unit 3. Local Area Networks, LANs

### Carrier Sense Multiple Access/Collision Detection (CSMA/CD)

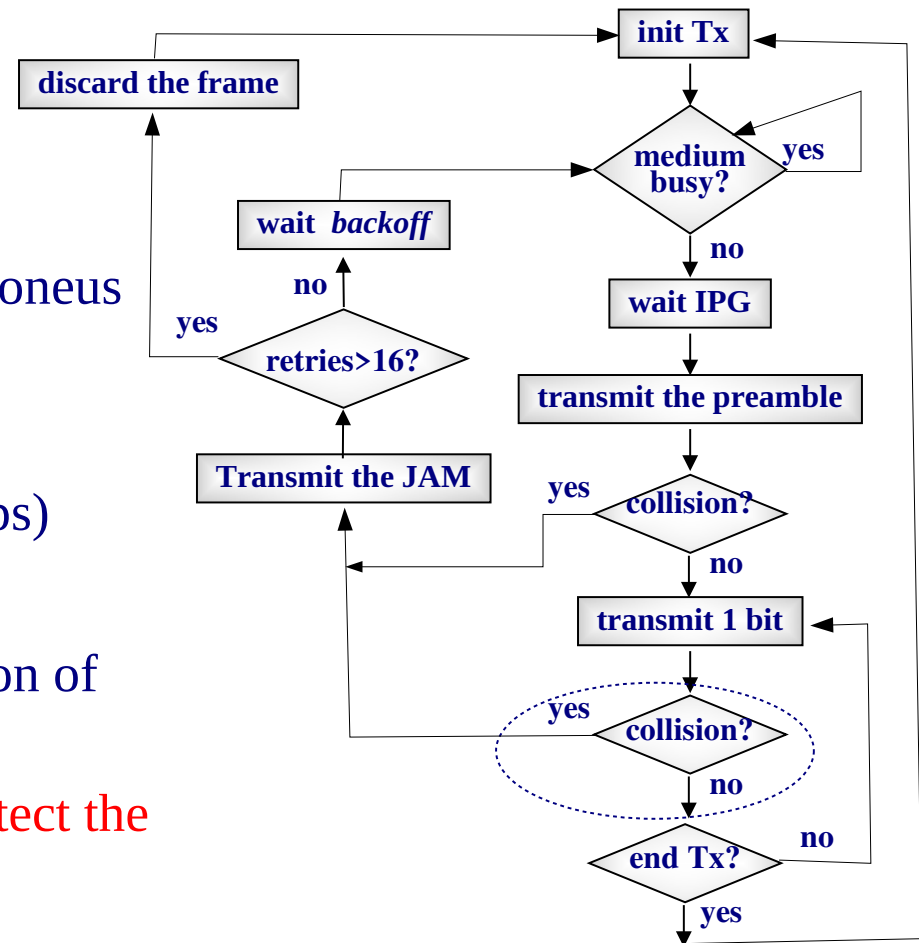
- Is a random MAC where the stations “listen” the medium (*carrier sense*) before transmission.
- When the medium is becomes free the frame is transmitted immediately, and the medium is listened to detect collisions.
- In case of collision, the frame is retransmitted after a random *backoff* time.

# Unit 3. Local Area Networks, LANs

## Ethernet – CSMA/CD Ethernet protocol (simplified)

### Legend:

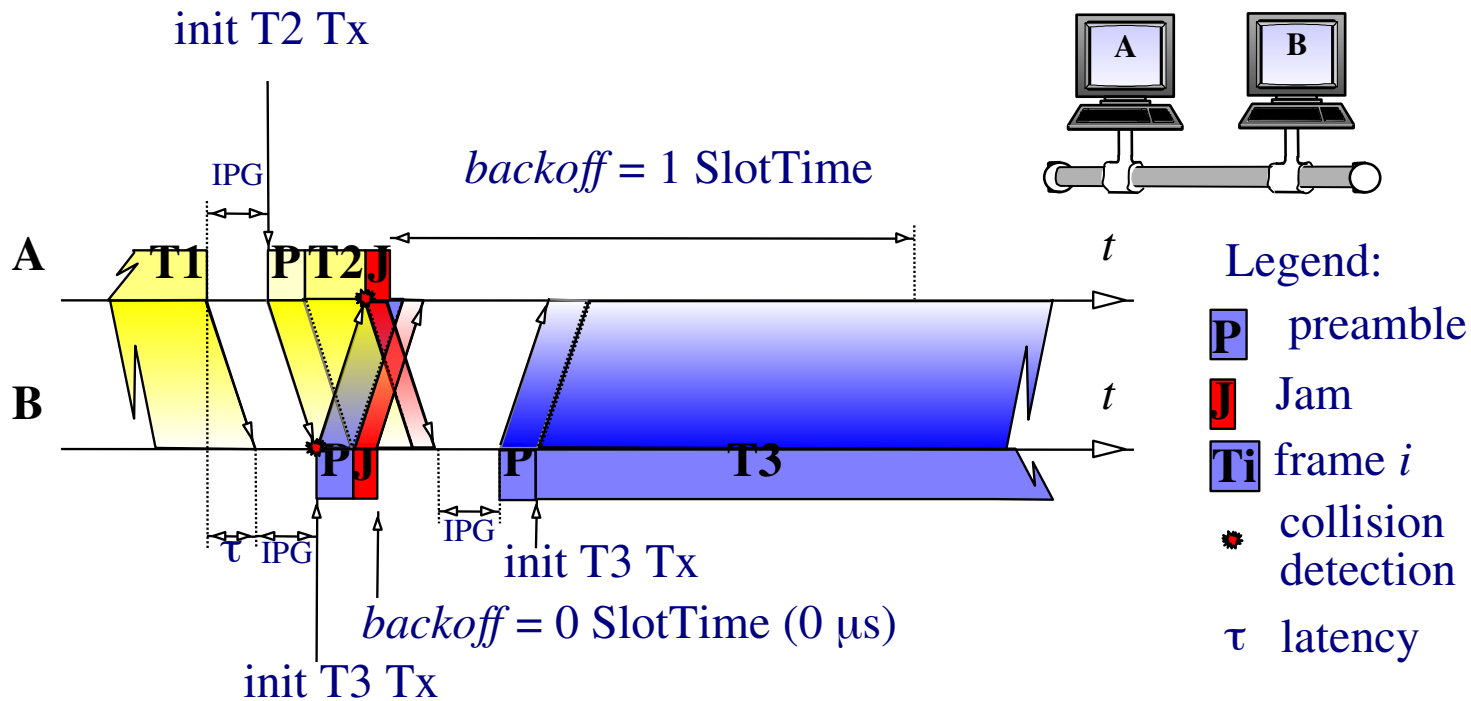
- InterPacket Gap (**IPG**): 96 bits.
- **JAM**: 32 bits that produce an erroneous CRC.
- $backoff = n T_{512}$
- $T_{512}$ : **SlotTime** (51,2  $\mu$ s at 10 Mbps)
- $n = \text{random}\{0, 2^{\min\{N, 10\}} - 1\}$ ,
  - $N$ : number of retransmission of the same frame (1, 2...)
- **The transmitting station must detect the collision** (no ack is sent).



# Unit 3. Local Area Networks, LANs

## Ethernet – Collision example

- Stations A y B have frames ready to Tx:



NOTE: The preamble is not interrupted in case of collision, and the JAM is Tx immediately after.

## Unit 3. Local Area Networks, LANs

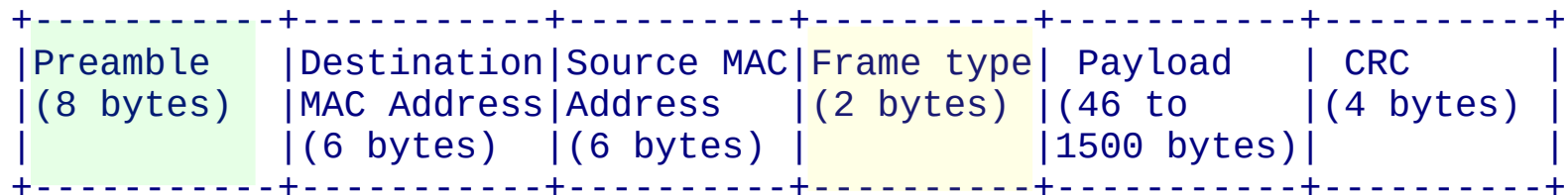
### Ethernet – Half Duplex and full-duplex

- **Half Duplex**: Using CSMA/CD only one NIC can be simultaneously transmitting into the medium.
- **Full Duplex**: When 2 Ethernet NICs are connected point-to-point, some Ethernet standards allow a full-duplex Tx, .
- Ethernet NICs have an **auto-negotiation** mechanism to detect the full-duplex availability.
- **In full-duplex mode Ethernet NICs deactivate CSMA/CD** (no collisions can occur).

## Unit 3. Local Area Networks, LANs

### Ethernet – Frames

- Ethernet II (DIX) Frame:



- Min. length: 64B => Padding with 0 if needed (e.g. ARP). Wireshark keep in mind:
  - FCS also known as CRC (cyclic redundancy check) are stripped by NICs => -4B
  - Padding done by NICs => Not show in outgoing frames
- **Preamble:** Give time to detect, synchronize and start reception.
- **Frame type:** Identifies the upper layer protocol (IP, ARP, etc. RFC 1700, Assigned numbers)
  - 0x0800 for IPv4
  - 0x0806 for ARP
  - 0x86DD for IPv6
  - (0x8808 for Ethernet flow control (Control opcode: 0x0001))
  - 0x8100 for VLAN tagging (IEEE-802.1Q)

# Unit 3. Local Area Networks, LANs

## Ethernet – Different Ethernet Standards

### Denomination:

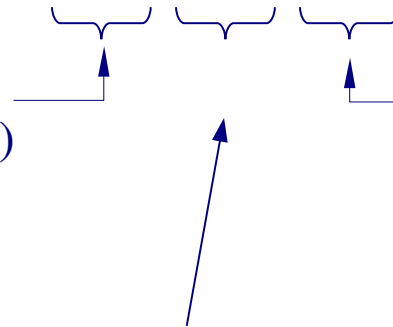
#### Line **bitrate**:

- 10: 10 Mbps
- 100: 100 Mbps
- 1000: 1000 Mbps (1 Gbps)
- 10G: 10 Gbps

**Base** band signal.

**Broad**: translated band signal.

## xBasey



#### **Various meanings**:

- Number: Maximum segment distant in hundreds of m.
- Reference to the medium type:
  - T: UTP
  - F: Optical Fiber
  - Other:
    - T4: Uses 4 UTP pairs.
    - TX: Full Duplex
    - ...

# Unit 3. Local Area Networks, LANs

## Ethernet – Different Ethernet Standards (some)

Commercial name	bps	Standard	year	Name	Cabling	UTP/OF Pairs	Connector	Codification	segment distance*	
									Half duplex	Full duplex
Ethernet	10Mbps	802.3	1983	10Base5	Coax-thick	-	AUI	Manchester	500m	n/a
		802.3a	1985	10Base2	Coax-thin	-	BNC	Manchester	185m	n/a
		802.3i	1990	10BaseT	UTP-cat.3	2	RJ45	Manchester	100m	100m
		802.3j	1993	10BASE-FL	FO	2	SC	on/off Manchester	2000m	>2000m
Fast Ethernet	100Mbps	802.3u	1995	100BaseTX	UTP-cat.5	2	RJ45	4B/5B	100m	100m
		802.3u	1995	100BaseFX	FO	2	SC	4B/5B	412m	2000m
		TIA/EIA-785	1999	100BaseSX	FO/led	2	SC	4B/5B	300m	300m
Gigabit-Eth.	1Gbps	802.3z	1998	1000BaseSX	FO	2	SC	8B/10B	275-316m	275-550m
		802.3z	1998	1000BaseLX	FO	2	SC	8B/10B	316m	550-10000m
		802.3z	1998	1000BaseLH	FO	2	SC	8B/10B	n/a	100km
		802.3ab	1999	1000BaseT	UTP-cat. 5e	4	RJ45	PAM5	100m	100m
10Gigabit-Eth.	10Gbps	802.3ae	2002	10GBASE-CX4	InfiniBand	4	CX4	8B/10B	n/a	15m
		802.3ae	2002	10GBASE-SR	FO	2	SC	64B/66B	n/a	26-300m
		802.3ae	2002	10GBASE-LR	FO	2	SC	64B/66B	n/a	10km
		802.3ae	2002	...	FO	2	SC	...	n/a	...

\*With OF the distance depends on the OF type.

# Unit 3. Local Area Networks, LANs

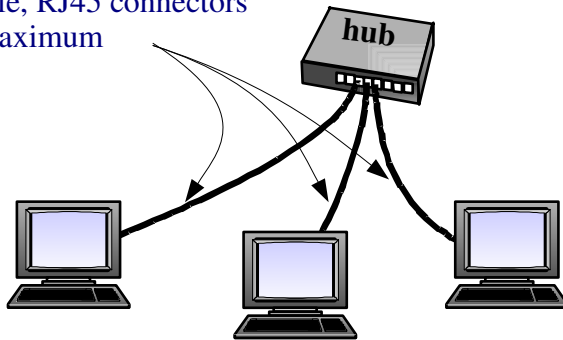
## Ethernet – Different Ethernet Standards: 10BaseT

### 1990. Cable UTP-cat 3.

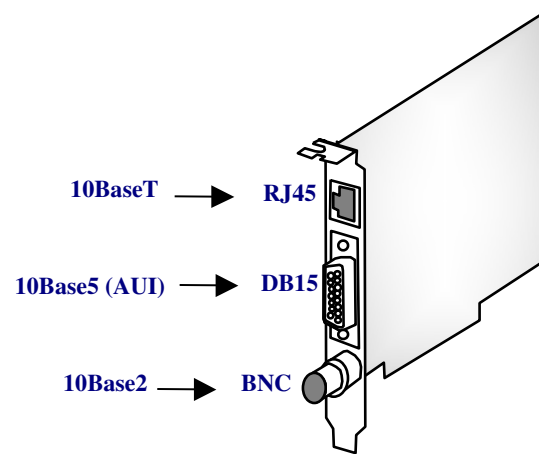
- **Hub**: Is a multi-port repeater (layer 1).
- The signal received in 1 port is retransmitted by all the others.
- Always half duplex

Otherwise it could receive data from more than one port simultaneously, which is incompatible with "The signal received in 1 port is retransmitted by all the others"

10BaseT segments  
 UTP cable, RJ45 connectors  
 100 m maximum



Transceivers  
 AUI-BNC/AUI-RJ45



NIC "combo":  
 Supports 10Base5, 10Base2, 10BaseT

## Unit 3. Local Area Networks, LANs

### Ethernet – Different Ethernet Standards: after 10BaseT

All standards use UTP o OF (except 10GBaseCX4):

- **Fast** Ethernet (1995). 100BaseTX: UTP-cat. 5
- **Gigabit** Ethernet (1998). 1000BaseT: UTP-cat 5e
- **10Gigabit** Ethernet (2002). Uses optical fiber. The only copper standard is Infiniband with segment size  $\leq 15$ m.



NIC 10/100 – RJ45  
10BaseT-100BaseTX  
\$11.99



NIC 10/100/1000 - SC  
10BaseFL-100BaseFX-  
1000Base-SX  
\$151



NIC 10Gbps – CX4  
10GBaseCX4  
\$795



Infiniband cable with  
CX4 connectors

## Unit 3. Local Area Networks, LANs

### Outline

- Introduction
- IEEE LAN Architecture
- Ethernet
- **Ethernet Switches**
- Wireless LANs

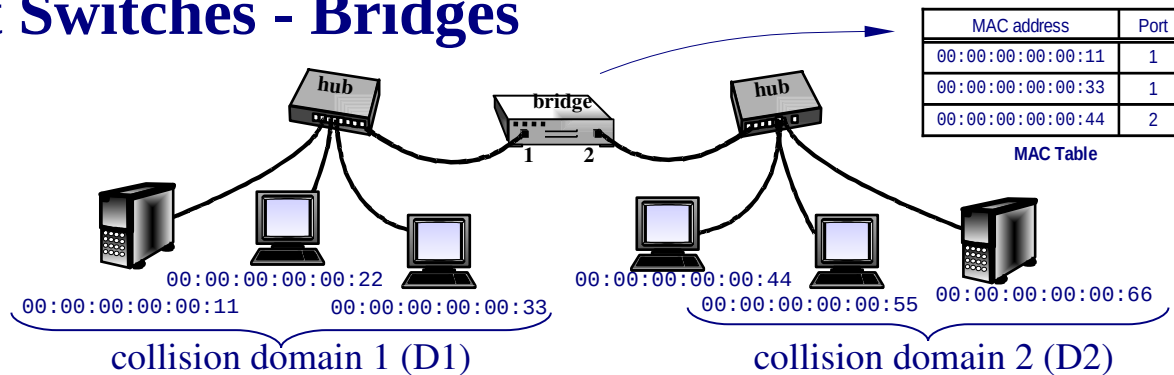
## Unit 3. Local Area Networks, LANs

### Ethernet Switches - Introduction

- Hub problem: If many stations are connected, may be inefficient due to **collisions**.
- Solution: bridges and switches.
- **Ethernet bridge**:
  - “plug and play” layer 2 device.
  - In each port there is a **NIC** in “promiscuous” mode: Capturing all frames.
  - The source address is used to “**learn**” which MAC is present in each port (MAC table). Each entry has the MAC and the port numbers.
  - The destination MAC is used to decide whether the frame needs to be retransmitted by another port.
  - Segments the “**collision domain**”.

# Unit 3. Local Area Networks, LANs

## Ethernet Switches - Bridges



### How the bridge works:

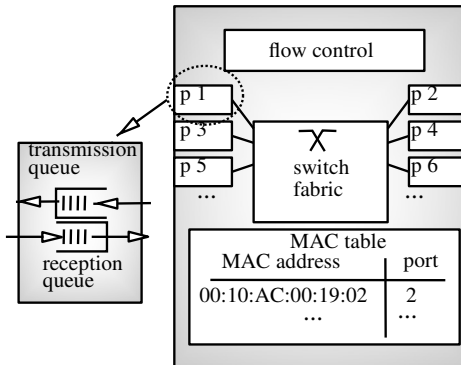
- If a frame is received with a **source address not in the MAC table**, it is added (*learning bridge*).
- If a frame from D1 is received with a **destination address that:** (i) is in D2, (ii) it is not in the table, (iii) it is broadcast: It is **sent into D2 (flooding)**.
- If it is received a frame from **D1 addressed to another station from D1**, it is **discarded (filtering)**.
- The entries have an **aging timer**. Each time an entry is used, it is refreshed. If the aging timer expires, the entry is removed.

### Advantages:

- **Segments the collision domain** (less collisions).
- Clients in **D1 and D2 can simultaneously send frames** to their servers.

# Unit 3. Local Area Networks, LANs

## Ethernet Switches - Switch Architecture



```
Switch#show mac-address-table
Address          Dest Interface
-----
00D0.5868.F583   FastEthernet 2
00E0.1E74.6ADA   FastEthernet 1
00E0.1E74.6AC0   FastEthernet 1
0060.47D5.2770   FastEthernet 3
00D0.5868.F580   FastEthernet 5
```

MAC Table in a CISCO Switch



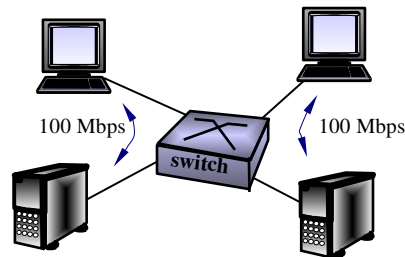
Edge and backbone CISCO switches.

### How the switch works:

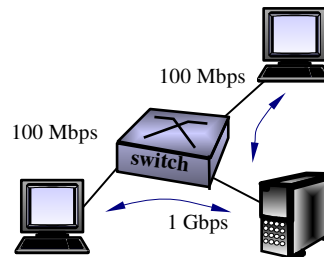
- It is equivalent to a “**multiport bridge**”.
- When a frame is received with a **source address** not in the table, it is added.
- If a frame is received with a **destination address**: (i) not in the table, (ii) broadcast or multicast: copy the frame in all transmission buffer of the other ports (**flooding**).
- If a frame is received with the address from another port: It is **switched** as fast as possible to the transmission buffer of that port.
- If it receives a frame addressed to another station from the same port, it is discarded (**filtering**).

## Unit 3. Local Area Networks, LANs

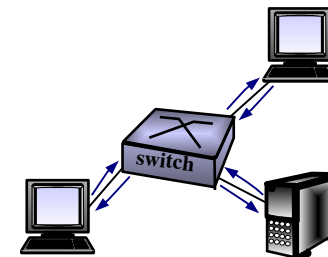
### Ethernet Switches - Switch Capabilities



Simultaneous Transmissions



Ports with Different bitrates



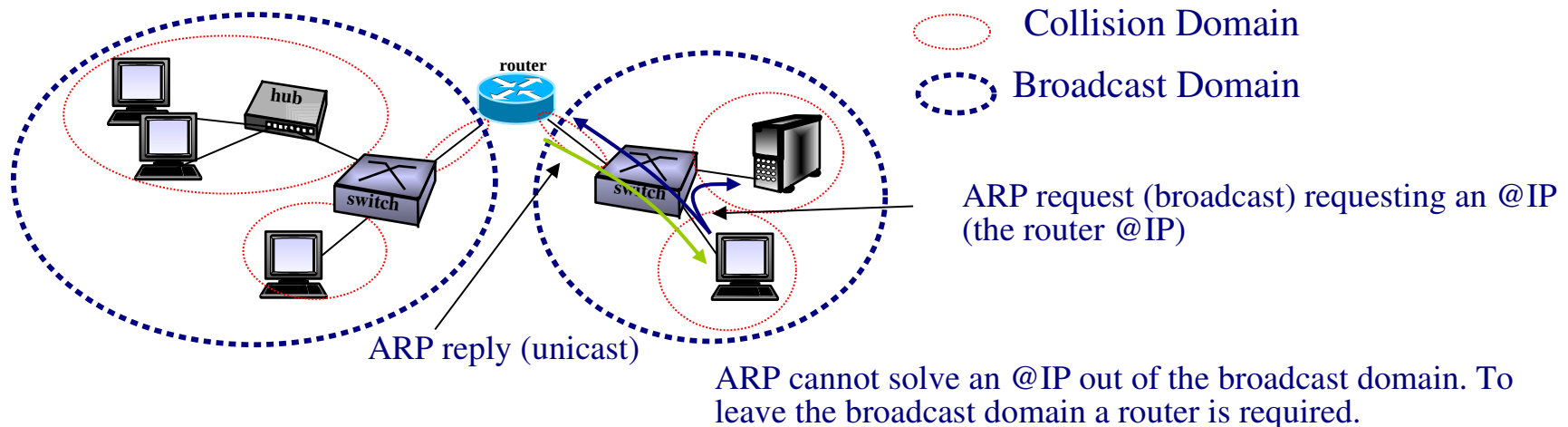
Full Duplex Ports

- Each port is different a **collision domain** (less collisions).
- Different ports can be simultaneously **Tx/Rx**.
- Ports can have different **bitrates**.
- Ports may be **full-duplex** (usable if only one host is connected).
- There can be ports simultaneously in **half or full** duplex mode.
- **Link aggregation**: Bitrate can be increased by aggregating several links, which behave as a single one (*etherchannel* in CISCO).
- **Security**: Stations can only capture the traffic of their collision domain.
- ...

## Unit 3. Local Area Networks, LANs

### Ethernet Switches - Broadcast and Collision Domains

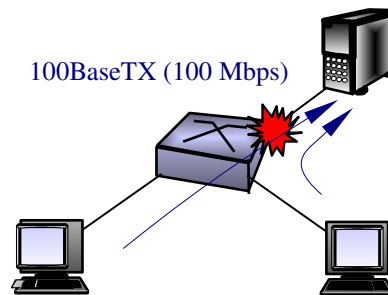
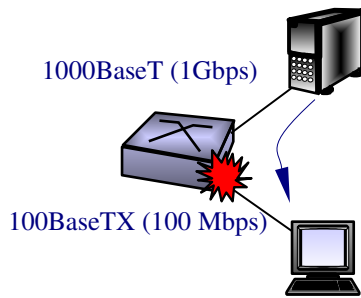
- **Broadcast Domain:** Set of stations that will received a broadcast frame sent by any of them.
- Unless Virtual LANs are used, a switch does not segment the broadcast domain.
- A router segment the broadcast domain.
- The broadcast reachability is important because allows reaching stations having one hop connectivity (with ARP).



## Unit 3. Local Area Networks, LANs

### Ethernet Switches – Flow Control

- Switch **Flow Control**: Consists of adapting the rate at which the switch receives the frames, and the rate at which the switch can send them.
- Examples:



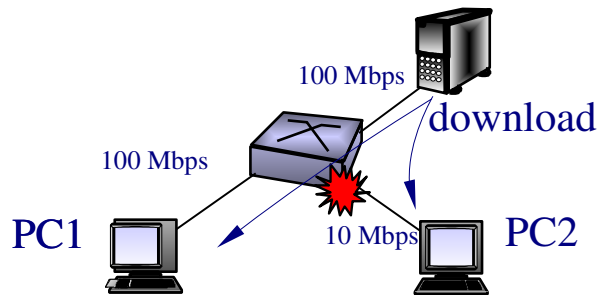
If no flow control is used, frames could be lost by buffer overflow.

- Flow control techniques (back pressure):
  - **Jabber signal (half duplex)**: The switch sends a signal into the port which need to be throttled down, such that CSMA see the medium busy.
  - **Pause frames (full duplex)**: The switch send special *pause frames*. These frames have an integer (2 bytes) indicating the number of slot-times (512 bits) that the NICs receiving the frame must be silent.

## Unit 3. Local Area Networks, LANs

### Ethernet Switches – Problems of Flow Control

- Flow Control can introduce inefficiencies (*head of line blocking*):



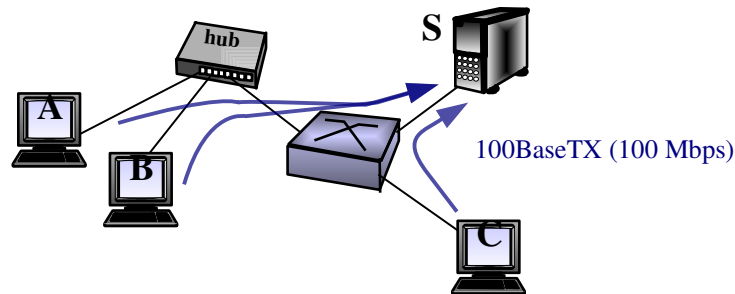
The **slow link** may trigger the flow control and send pause frames towards the server, causing under-utilization of the switch-server link.

- We would expect a download of approximately 90 Mbps for PC1 and 10 Mbps for PC2. However, the flow control can make the PC1 throughput to be significantly lower. **Switches allow disabling the flow control** in a link (In CISCO: `Switch(config-if)# flowcontrol send off`). If **flow control is disabled**, traffic is assumed to be controlled by **TCP**.
- If not otherwise stated, we shall assume an **ideal flow control** in the problems, which allow achieving the maximum throughput.

## Unit 3. Local Area Networks, LANs

### Ethernet Switches – Line bitrate sharing

- **Hub:** If the hub is the bottleneck for all the active ports, the capacity is equally shared between all ports where frames are transmitted.
- **Switch:** If one congested port is the bottleneck for all ports sending traffic to it, the port bit rate is equally shared between all ports sending traffic to it.
- Example:



- If A, B and C simultaneously transmit to S:  
throughput C  $\approx 100 \text{ Mbps} / 2 = 50 \text{ Mbps}$   
throughput A = throughput B  $\approx (100 \text{ Mbps} / 2) / 2 = 25 \text{ Mbps}$

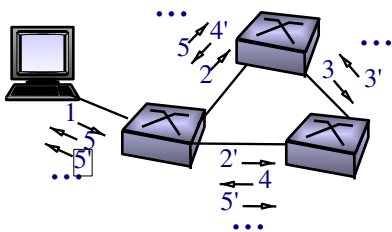
## Unit 3. Local Area Networks, LANs

### Ethernet Switches – Spanning Tree Protocol (STP)

- The basic principle of the “layer 2 routing” done by Ethernet switches is based on having a unique path to forward the frame towards the destination. Therefore, **loops are not allowed**.
- In practice loops can appear because:
  - They are introduced by accident.
  - They are desirable to have redundant path (fault tolerance).
- If loops are introduced without protection a **broadcast storm** is produced, and the network blocks:
 

No TTL at this layer

Frames multiply and remain turning indefinitely in the loop!



Other problems:

- Reception of duplicated frames
- MAC Tables instability

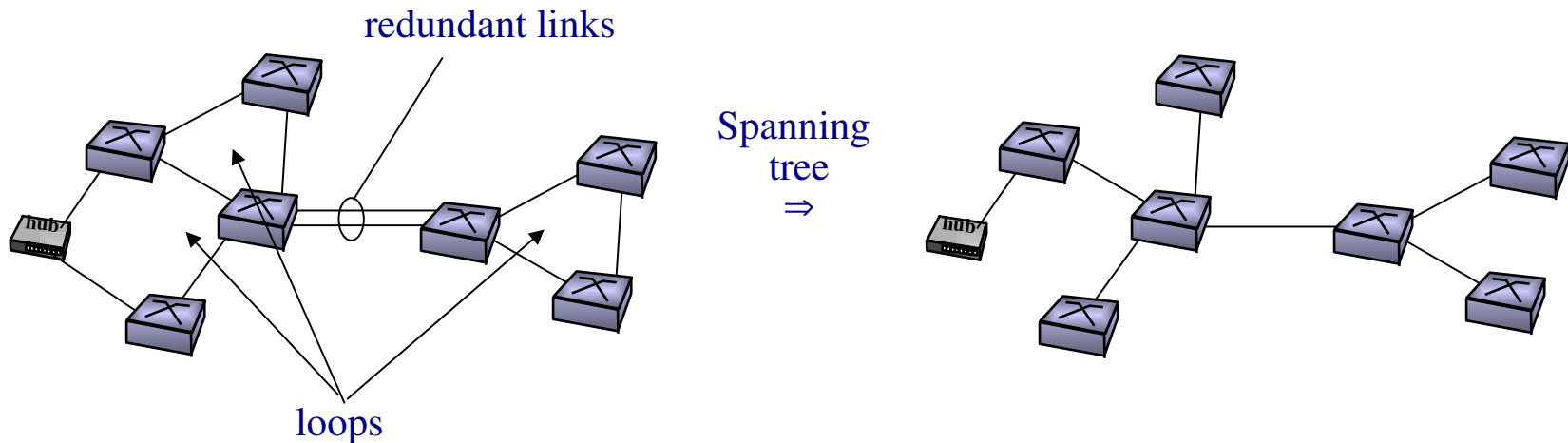


Solution: IEEE 802.1D Spanning Tree Protocol (STP)

## Unit 3. Local Area Networks, LANs

### Ethernet Switches – Spanning Tree Protocol (STP)

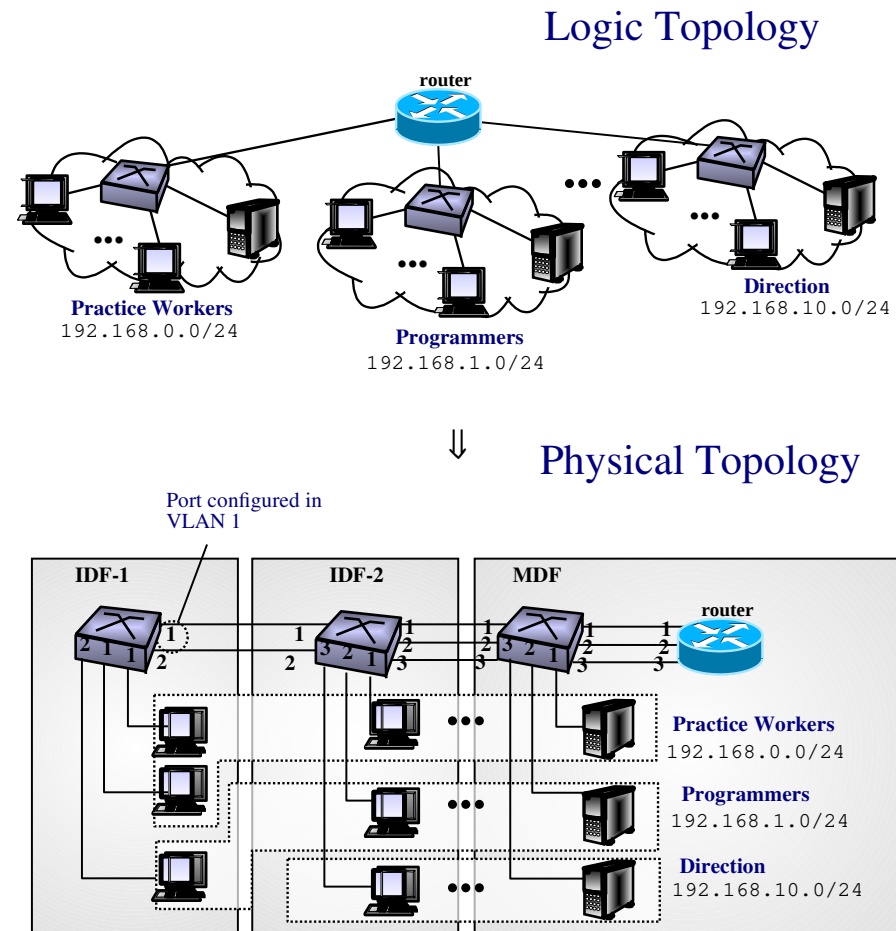
- STP goal: Build a loop free topology (**STP-tree**) with optimal paths. The ports that do not belong to the STP tree are **blocked**.
- The switches send **802.1D messages** to their neighbors to build up the STP-tree. If the topology changes (e.g. due to a link failure), a new STP-tree is setup.



# Unit 3. Local Area Networks, LANs

## Ethernet Switches – Virtual LANs, VLANs

- Motivation:
- Grouping related servers and hosts in different broadcast domains.
- How VLANs work:
- Each switch port belongs to a VLAN.
- The switch **isolates different VLANs**: The switch flooding is done only towards the ports of the same VLAN. Each VLAN is equivalent to a different physical switch.
- A **router** is needed to send traffic to a different VLAN.



## Unit 3. Local Area Networks, LANs

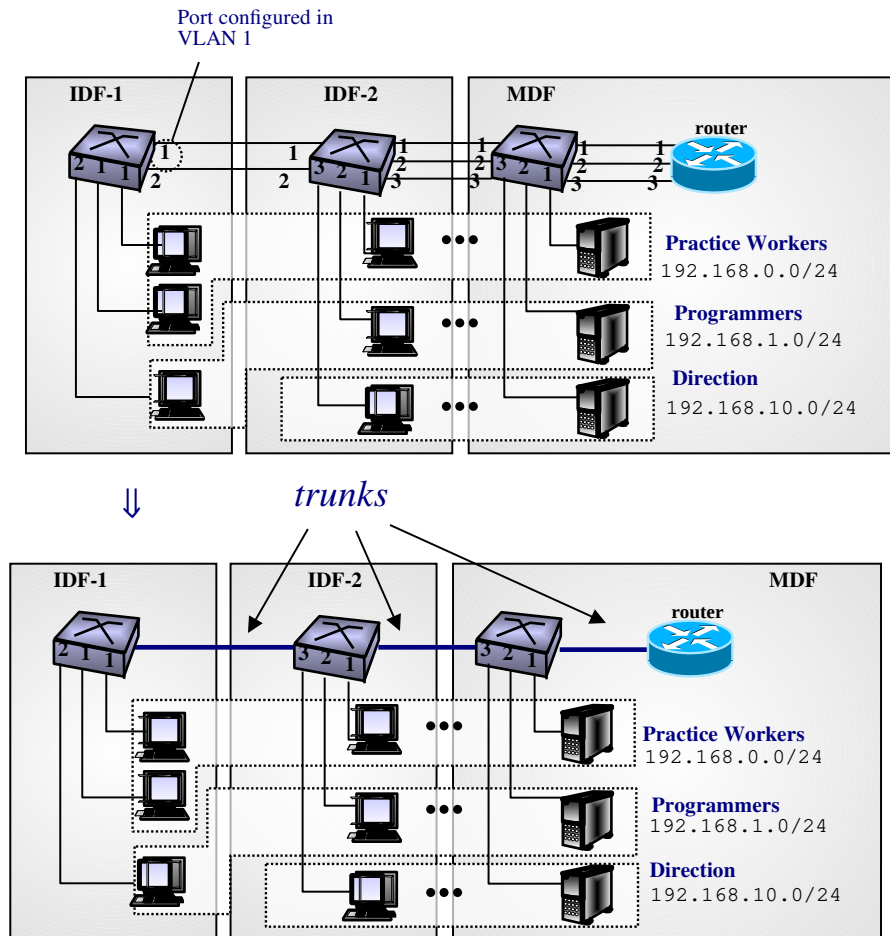
### Ethernet Switches – Virtual LANs, VLANs

- **Advantages:**
- Flexibility of the physical placement of the devices.
- Facilitates the network grow.
- Facilitates the network management: Changing the topology, adding new subnetworks, moving ports from one network to another.
- **NOTE:** Since each VLAN is a different broadcast domain, usually a different **STP** instantiation is used **for each VLAN**. Thus, a different STP-tree is build in each VLAN.

# Unit 3. Local Area Networks, LANs

## Ethernet Switches – VLAN Trunking

- Problem:
- Why connecting several ports between the same devices?
- **Trunking:**
- The port configured as trunk belongs to several VLANs (maybe all).
- The traffic sent in one VLAN is also sent to the trunk the VLAN belongs to.
- A **tagging** mechanism is used in the trunk to discriminate the traffic from different VLANs.



## Unit 3. Local Area Networks, LANs

### Ethernet Switches – VLAN Trunking

- Trunking Protocols:
- Inter-Switch Link (**ISL**). CISCO proprietary protocol.
- **IEEE-802.1Q**.

This is the position “Frame type” of a standard Ethernet II header. The value 0x0811 adds 4 extra bytes to the header: the first 2 for the “TCI” and the last 2 for the the “Frame type” of the next header (IPv4, IPv6, ARP, etc.)

Preamble	Destination	Source MAC	TPID	TCI	Frame type	Payload	CRC
(8 bytes)	MAC Address (6 bytes)	Address (6 bytes)	0x0811 (2 bytes)	(2 bytes)	(2 bytes)	(46 to 1500 bytes)	(4 bytes)

IEEE-802.3 frame with the 802.1Q tag.

### Legend:

- *Tag Protocol Identifier* (TPID): Field with the hex. value 0x8100 for an Ethernet frame.
- *Tag Control Information* (TCI): Contains several fields. The most important is the **VLAN ID (12 bits)**, which identify the VLAN.

# Unit 3. Local Area Networks, LANs

## Outline

- Introduction
- IEEE LAN Architecture
- Ethernet
- Ethernet Switches
- **Wireless LANs**

## Unit 3. Local Area Networks, LANs

### Wireless LANs (WLANs) – Brief WLAN History

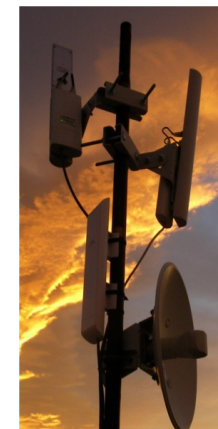
- 1971: Prof. Norman **Abramson** develops ALOHANET for the University of Hawaii
- 1990: many companies develop proprietary WLANs products.
- 1996: ETSI approves HIPERLAN/1 and 1997 IEEE approves **802.11**
- Late 90 and 2000: Wi-Fi Alliance, tremendous growth of 802.11 products.
- 1999: 802.11a, 802.11b. 2003: 802.11g. 2009: 802.11n...



802.11 indoor APs



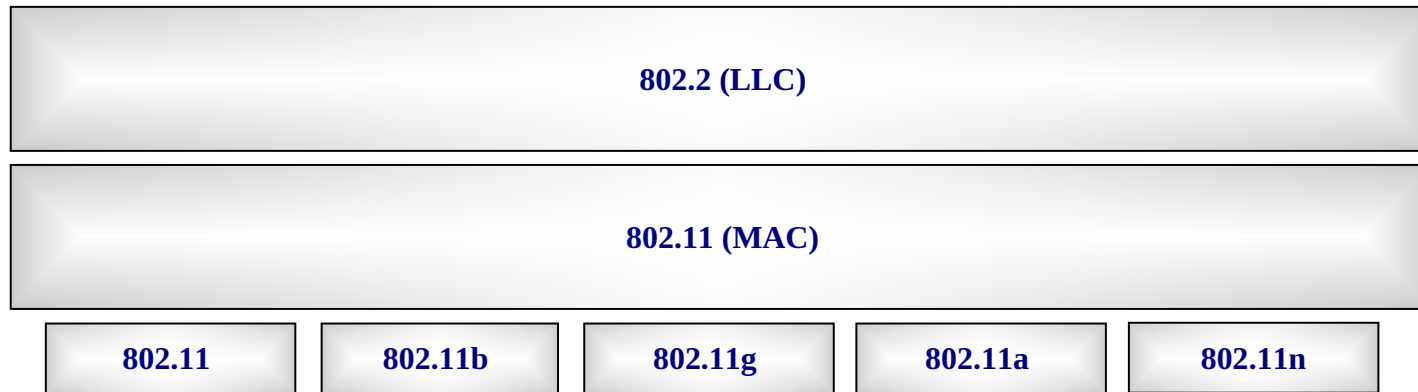
802.11 NICs



802.11 outdoor

# Unit 3. Local Area Networks, LANs

## Wireless LANs (WLANs) – 802.11



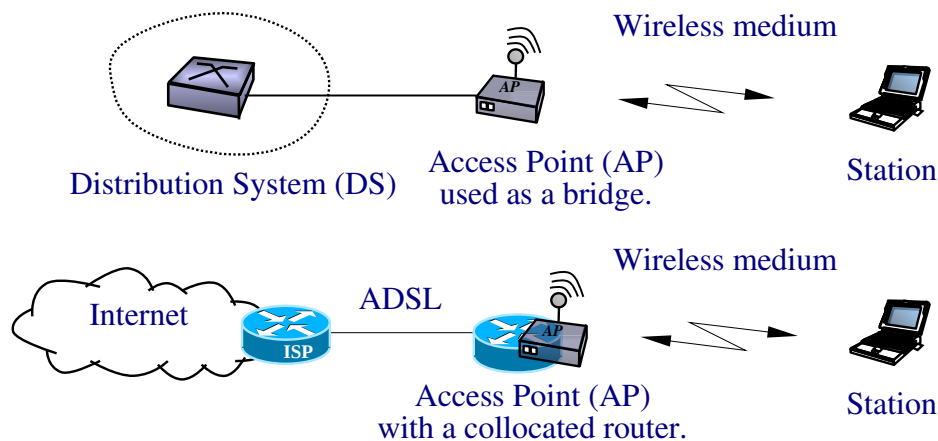
<u>Standard</u>	<u>Bitrate</u>	<u>ISM band</u>
802.11	1, 2 Mbps	2.4 GHz
802.11b	up to 11 Mbps	2.4 GHz
802.11a	up to 54 Mbps	5 GHz
802.11g	up to 54 Mbps	2.4 GHz
802.11n	up to 600 Mbps	2.4 or 5 GHz

- **ISM:** Industrial Scientific and Medical. No licence required for non commercial usage.

## Unit 3. Local Area Networks, LANs

### Wireless LANs (WLANs) – 802.11 Components

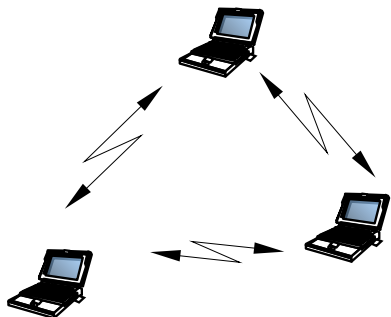
- Distribution System (**DS**):
  - Used by APs to exchange frames with one another and with wired networks. (e.g. an ethernet switch).
- Access Point (**AP**)
  - Simplify communication between stations.
  - All transmissions go through the AP.
  - APs are bridges and may have a collocated router.



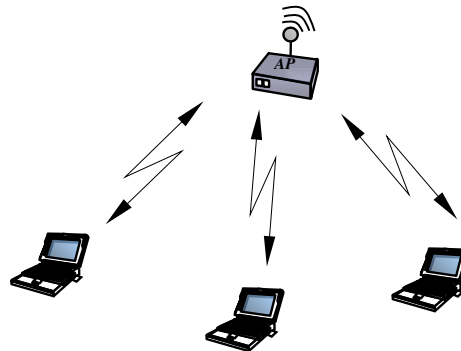
## Unit 3. Local Area Networks, LANs

### Wireless LANs (WLANs) – 802.11 Components (I/II)

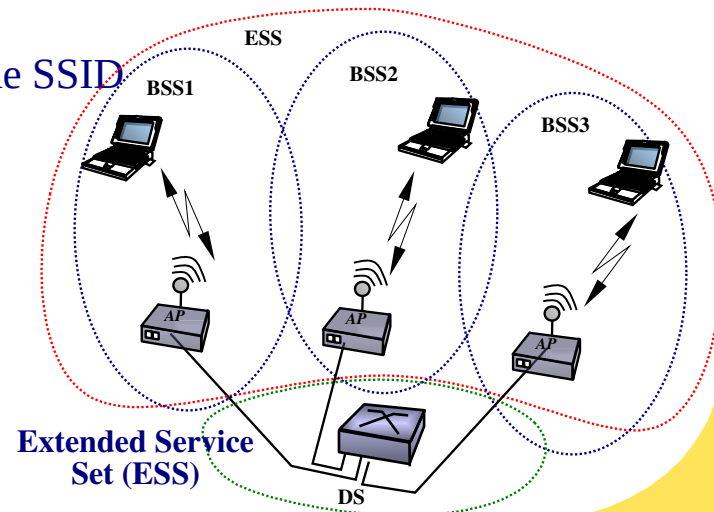
- Service Set: a group of wireless network devices which share a service set identifier (**SSID**) – typically the natural language label that users see as a network name (e.g. “My WiFi”)
  - A service set is either a Basic Service Set (**BSS**) or an Extended Service Set (**ESS**)
- BSS: a subgroup of devices that share physical-layer medium access (i.e. that they are wirelessly networked)
  - Identified by a BSS Identifier (**BSSID**): 48 bits number
- ESS: a wireless network, created by multiple access points, which appears to users as a single, seamless network
  - Identified by a Extended Service Set Identifier (**ESSID**): the SSID



**Independent BSS (IBSS)**  
(*ad-hoc mode*)



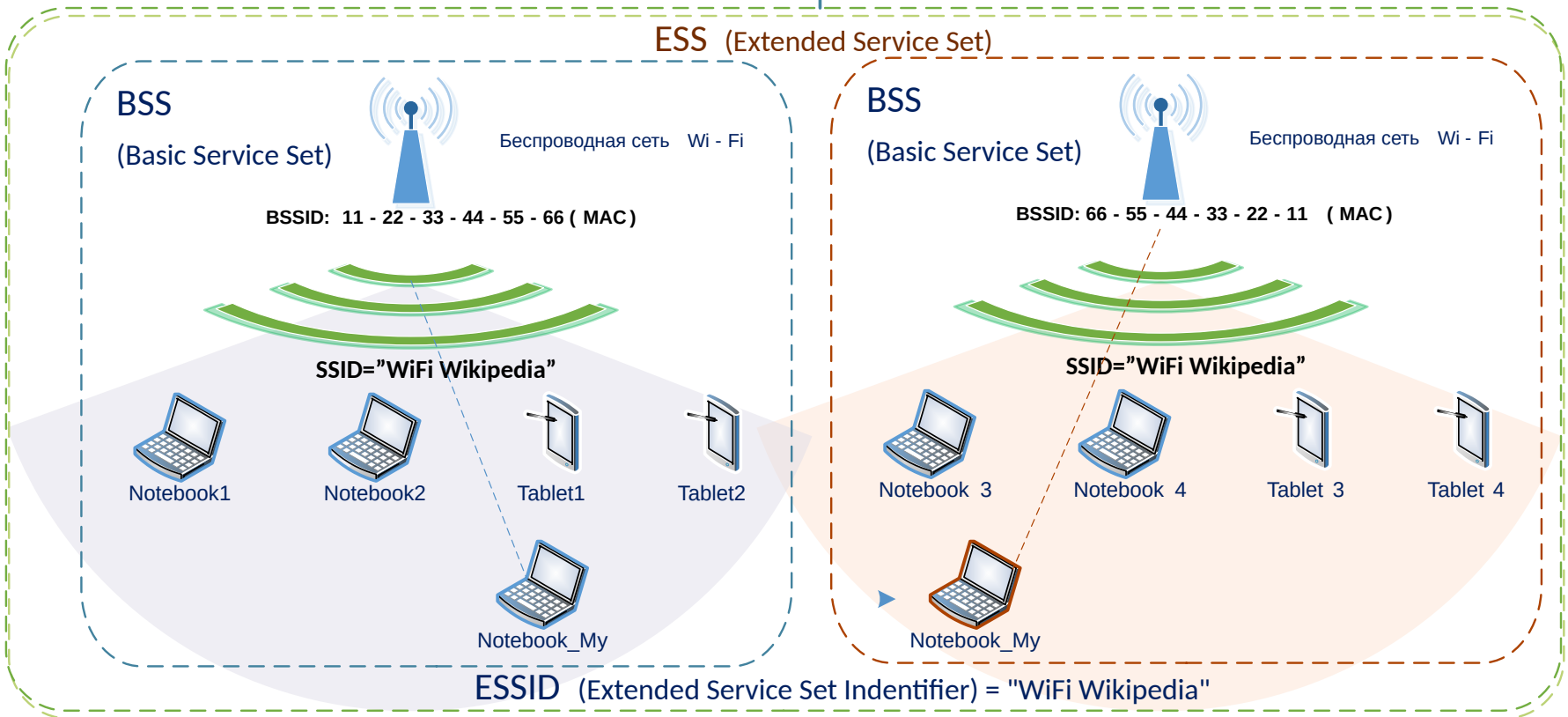
**Infrastructure BSS** (*infrastructure mode*)



**Extended Service Set (ESS)**

# Unit 3. Local Area Networks, LANs

## Wireless LANs (WLANs) – 802.11 Components (II/II)



Source: [https://en.wikipedia.org/wiki/Service\\_set\\_\(802.11\\_network\)](https://en.wikipedia.org/wiki/Service_set_(802.11_network))

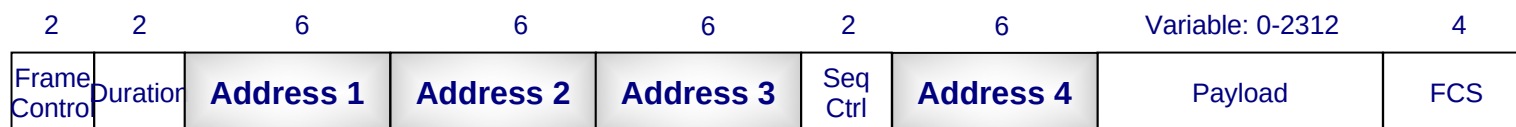
## Unit 3. Local Area Networks, LANs

### Wireless LANs (WLANs) – 802.11 MAC

- Carrier Sense Multiple Access with Collision Avoidance (**CSMA/CA**): In contrast to CSMA/CD, **always wait a random backoff before Tx**. **Acks are needed to detect whether a transmitted frame collided**.
- CSMA/CD is not used because collisions can hardly be detected in wireless (because in the antenna the Tx power is orders of magnitude higher than Rx power).

### Wireless LANs (WLANs) – 802.11 Addresses

- Designed to be **compatible with ethernet**.
- Use non overlapping ranges with ethernet.
- The frame may have **up to 4 addresses**. The meaning of the addresses is specified by the bits **to-DS** and **from-DS** of the control.
- The **BSSID** is always present to identify frames belonging to the BSS



Generic frame format

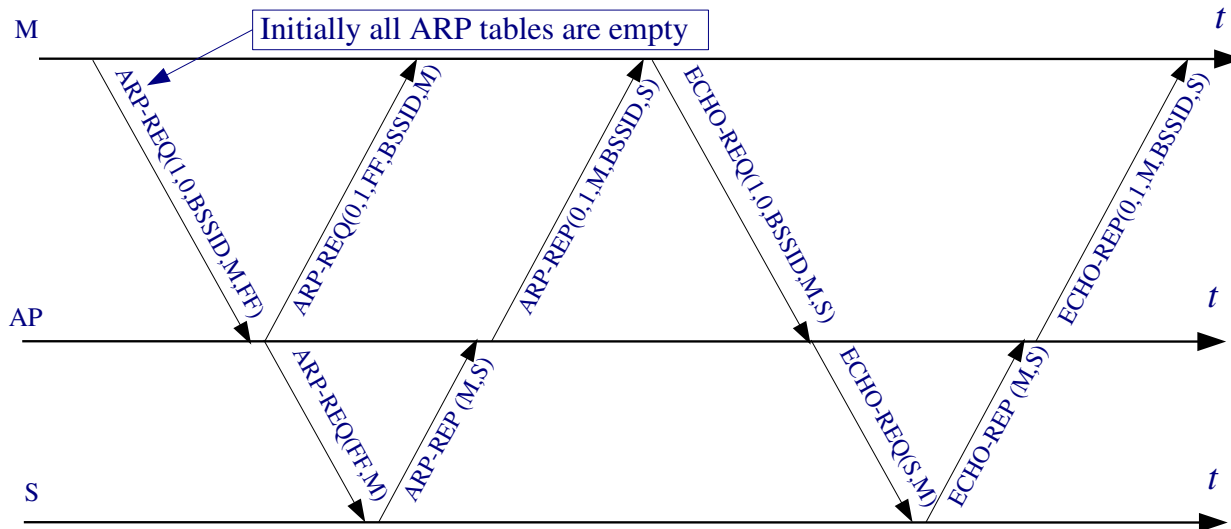
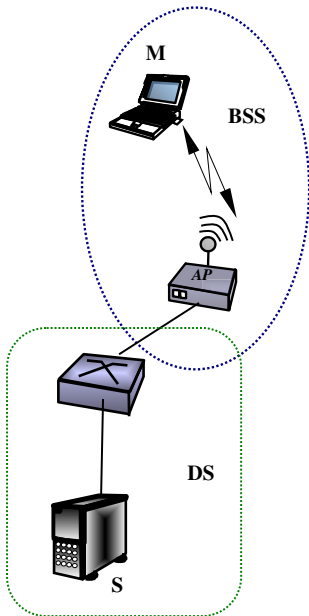
# Unit 3. Local Area Networks, LANs

## Wireless LANs (WLANs) – 802.11 Addresses

Scenario	Usage	to-DS	from-DS	Address1	Address2	Address3	Address4
STA → STA	Ad-hoc	0	0	DA	SA	BSSID	-
STA → AP	Infrastructure	1	0	BSSID	SA	DA	-
AP → STA	Infrastructure	0	1	DA	BSSID	SA	-
AP → AP	WDS	1	1	RA	TA	DA	SA

Legend: Destination Address (DA), Source Address (SA), Receiver Address (RA), Transmitter Address (TA)

Example:  
M# ping S



**Legend, frames 802.11:**

MESSAGE-TYPE(to-DS, from-DS, Address1, Address2, Address3)

**Legend, frames ethernet:**

MESSAGE-TYPE(destination address, source address)

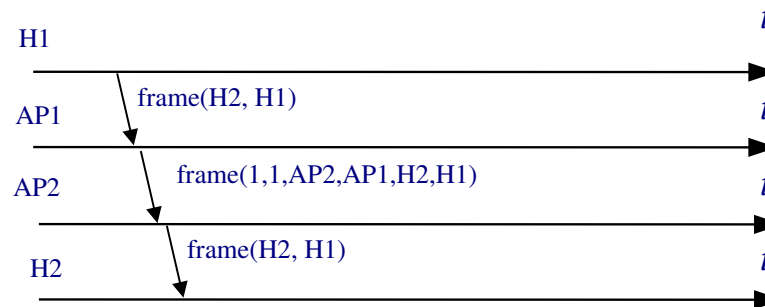
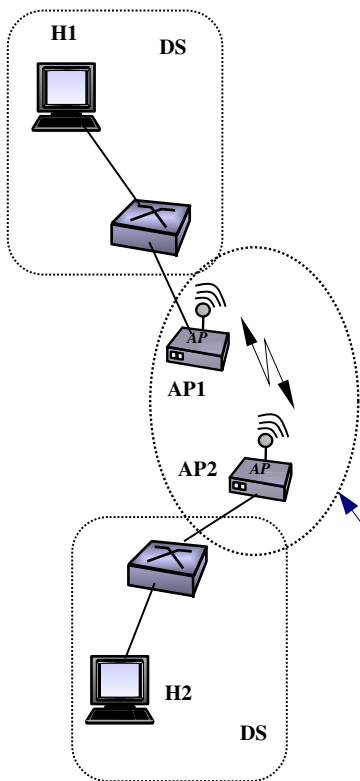
FF is the broadcast address

# Unit 3. Local Area Networks, LANs

## Wireless LANs (WLANs) – 802.11 Addresses

Scenario	Usage	to-DS	from-DS	Address1	Address2	Address3	Address4
STA → STA	Ad-hoc	0	0	DA	SA	BSSID	-
STA → AP	Infrastructure	1	0	BSSID	SA	DA	-
AP → STA	Infrastructure	0	1	DA	BSSID	SA	-
AP → AP	WDS	1	1	RA	TA	DA	SA

Legend: Destination Address (DA), Source Address (SA), Receiver Address (FA), Transmitter Address (TA)



**Legend, frames 802.11:**

frame(to-DS, from-DS, Address1, Address2, Address3, Address4)

**Legend, frames ethernet:**

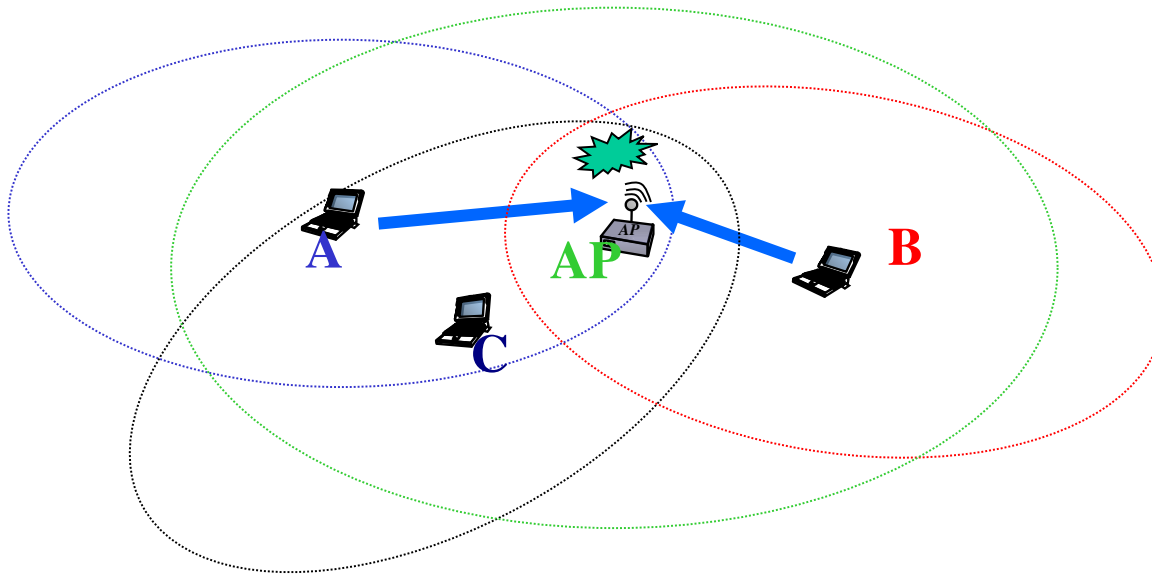
frame(destination address, source address)

The Wireless Distribution System (WDS) allows to expand a wireless network over multiple APs without the need of a DS

## Unit 3. Local Area Networks, LANs

### Wireless LANs (WLANs) – Hidden Node Problem

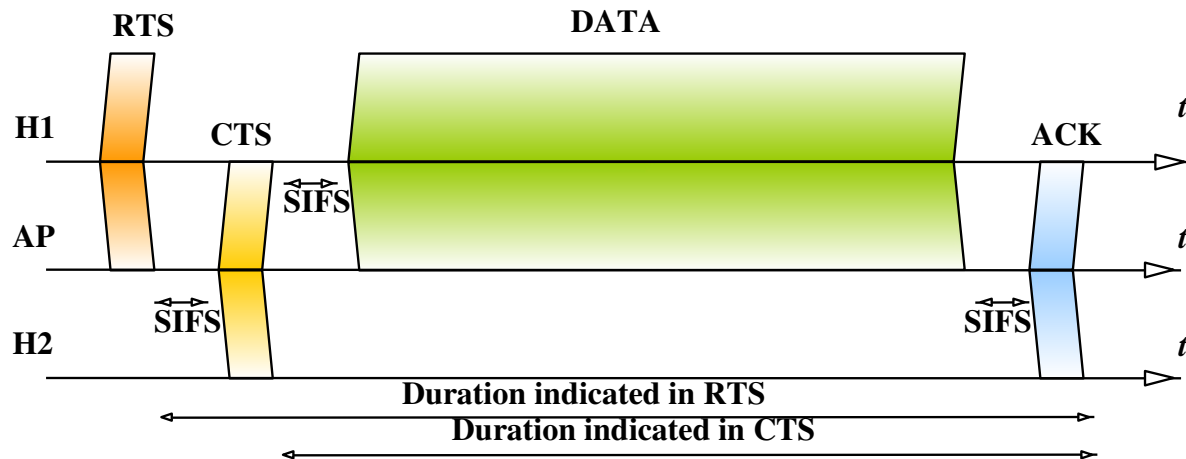
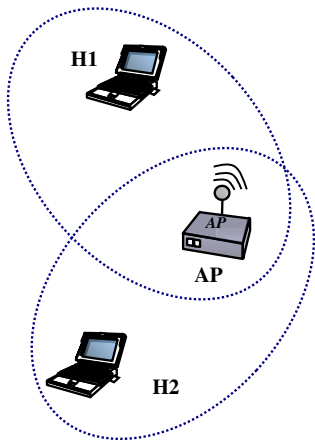
- Node A is in coverage with AP and C
- A and B cannot hear each other
- When A transmits to AP, B cannot detect the transmission using the carrier sense mechanism
- If B transmits, a collision will occur at AP



## Unit 3. Local Area Networks, LANs

### Wireless LANs (WLANs) – 802.11 RTS/CTS

- Optional mechanism to solve the hidden node problem.



- RTS** is sent using the basic access mechanism.
- Upon receiving a RTS/CTS, the station set the **Network Allocation Vector (NAV)** to the indicated duration. While the NAV is non zero, the virtual carrier sensing indicates that the medium is busy.
- RTS/CTS is **only used for unicast Tx**.
- There is a **threshold** indicating the minimum frame size for using RTS/CTS.

## Unit 3. Local Area Networks, LANs

### Exercicis proposats

- Exàmens:
  - 2020p-ef: problemes des de 1 a 10
- Col·lecció problemes:
  - Problema 9
  - Problema 10
  - Problema 11
  - Problema 13
  - Problema 14 (Versió 19: hi ha un error a les solucions d'escenari 1 i escenari 2: el control de flux el fan les NICs per CSMA/CD)